

# NCS2535

## Triple 1.4 GHz Current Feedback Op Amp with Enable Feature

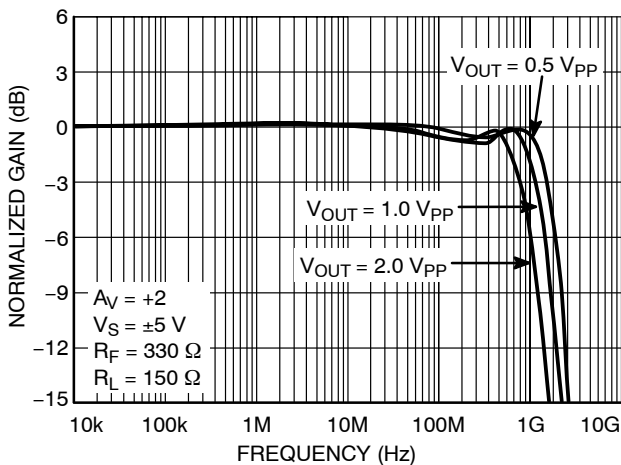
NCS2535 is a triple 1.4 GHz current feedback monolithic operational amplifier featuring high slew rate and low differential gain and phase error. The current feedback architecture allows for a superior bandwidth and low power consumption. This device features an enable pin.

### Features

- -3.0 dB Small Signal BW ( $A_V = +2.0$ ,  $V_O = 0.5 V_{p-p}$ ) 1.4 GHz Typ
- Slew Rate 2500 V/ $\mu$ s
- Supply Current 12 mA per Amplifier
- Input Referred Voltage Noise 5.0 nV/ $\sqrt{\text{Hz}}$
- THD -69 dB ( $f = 5.0 \text{ MHz}$ ,  $V_O = 2.0 V_{p-p}$ )
- Output Current 120 mA
- Enable Pin Available
- This is a Pb-Free Device

### Applications

- High Resolution Video
- Line Driver
- High-Speed Instrumentation
- Wide Dynamic Range IF Amp



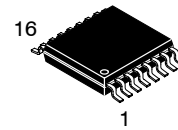
**Figure 1. Frequency Response:**  
Gain (dB) vs. Frequency  
 $A_V = +2.0$



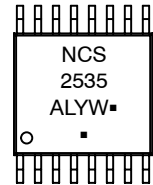
**ON Semiconductor®**

<http://onsemi.com>

### MARKING DIAGRAM



**TSSOP-16  
DT SUFFIX  
CASE 948F**



NCS2535 = Specific Device Code

A = Assembly Location

L = Wafer Lot

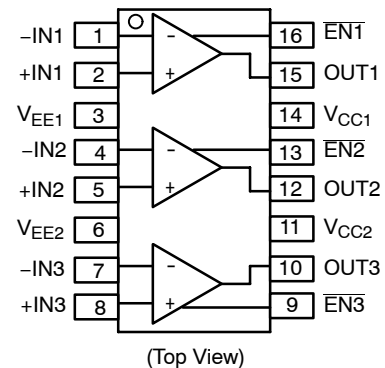
Y = Year

W = Work Week

▪ = Pb-Free Package

(Note: Microdot may be in either location)

### TSSOP-16 PINOUT



### ORDERING INFORMATION

Device	Package	Shipping <sup>†</sup>
NCS2535DTG	TSSOP-16	96 Units/Rail
NCS2535DTR2G	TSSOP-16	2500 Tape & Reel

<sup>†</sup>For information on tape and reel specifications, including part orientation and tape sizes, please refer to our Tape and Reel Packaging Specification Brochure, BRD8011/D.

\*For additional information on our Pb-Free strategy and soldering details, please download the ON Semiconductor Soldering and Mounting Techniques Reference Manual, SOLDERRM/D.